

one

19" Tablet PC Specifications



Freehand Pen-writing

1024 Levels of Pen-Point Pressure

USB 2.0

VGA

Ethernet LAN

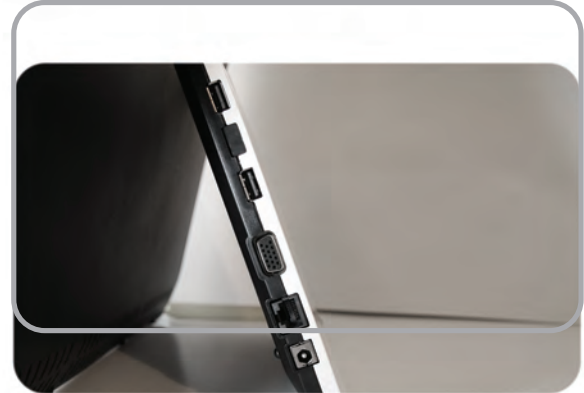
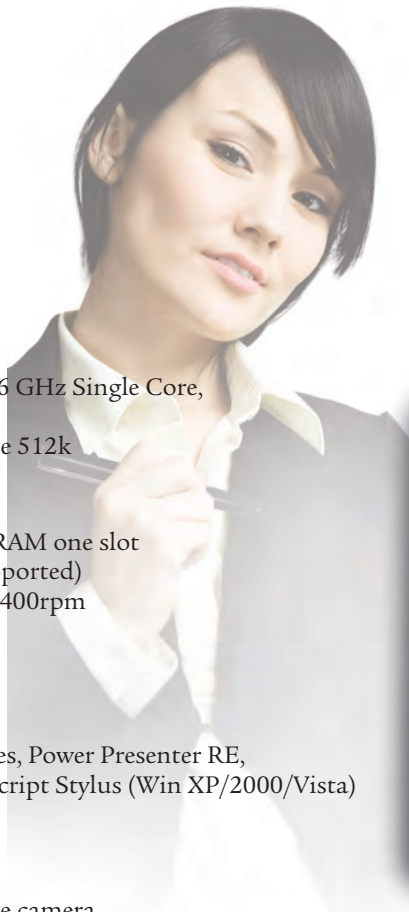
Power

Power On/Off button

FRONT: 19" Tablet PC
Model: ONE-19TC

1-877-79 TOUCH

www.myone.ca



19" All In One Touch Screen PC

Core

CPU Processor VIA Nano U2250, 1.6 GHz Single Core, FSB 533 MHz, BGA
 Chipset VIA VX800, L2 Cache 512k

Storage

Memory 1GB DDR2 667, SDRAM one slot (Maximum 2GB supported)
 Hard Drive 160GB, 2.5" SATA 5400rpm
 Optical Drive External (Optional)

System & Software

Operation System Optional
 Interactive Application Software Office Ink, Free Notes, Power Presenter RE, (Win XP/2000) MyScript Stylus (Win XP/2000/Vista)

Audio & Video

Graphic Card Integrated
 Camera Built-in 1.3M website camera
 Speakers Built-in 1w*2
 Microphone Built-in

Communication

Ethernet LAN 10/100/1000 Gigabit
 Wireless LAN (WiFi) 802.11 a/b/g
 Blue Tooth N/A
 3G Module N/A

Input/Output

USB USB 2.0 x2
 RJ45 RJ45 Ethernet LAN x1
 Audio Microphone Jack x1, Phone x1
 VGA Input x1, Output x1
 Card Reader 3 in 1 (SD, MMC, MS) x1

Power

Power Adapter DC out: 19V 3.42A, AC in: (Universal) 100-240 VAC 50/60 Hz
 Power Consumption On <48W, Off <3W

Accessories

Interactive Pen kits package Pen x1, 1.5V AAA Battery x1, backup of nib x1
 Mouse & Keyboard Optional
 Power Adapter & Power Cord 19V DC, 65W Power Adapter x1, 1.5m Power Cord x1
 Publications Quik Start Guide, User Guide

Physical Specs

Stand Adjustability Tilt 0° to 45°
 Wall Mounting with handle through single pothook
 Kensington Lock Yes
 Unit Dimension (W x H x D) 376 mm x 371.5 mm x 47mm (H:25mm.if without base)
 Weight Net 4.6kg, Gross 5.6kg

I-877-79 TOUCH

www.myone.ca